



Fluid Monitoring Module FMM

Description

The FluidMonitoring Module FMM series combines two of Hydac's condition monitoring products, the ContaminationSensor CS 1000 and AquaSensor AS 1000, in one system.

It provides the user with a robust and stationary system for online measurement of

- particle contamination and
- water content (e.g. to detect leakage) in hydraulic and lubrication fluids.

The FMM series of blocks have all the necessary connections and are therefore easy to install in existing hydraulic circuits.

Various models are available for use in filtration & cooler/heater circuits, pressure and high pressure applications.

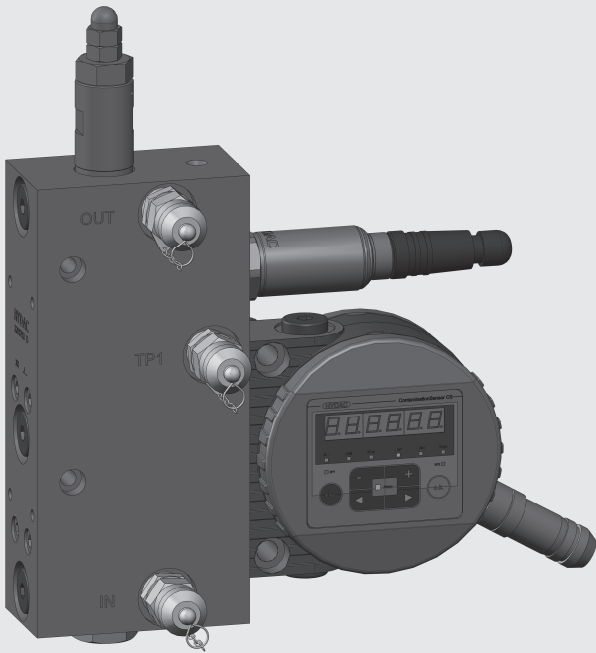
Advantages

- Cost-effective installation
- Critical machine conditions are identified in good time
- Continuous oil condition monitoring
- Condition-based maintenance planning

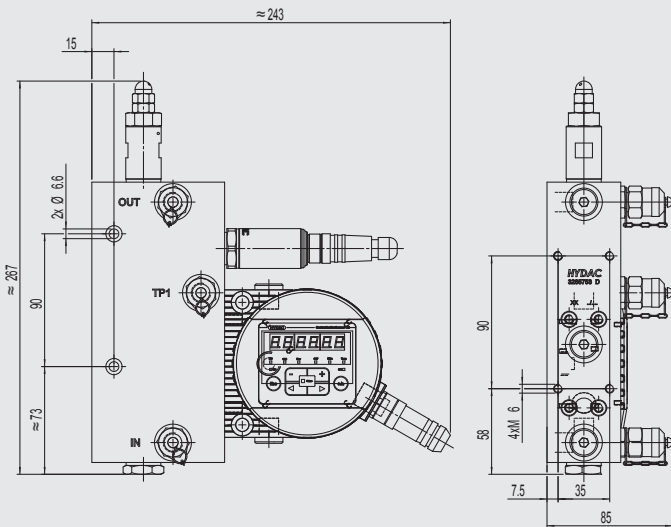
Technical specifications

General data	
FMM - O - M - ...	Offline circuits 6 ... 15 bar
FMM - P - S - ...	Pressure circuits 15 ... 300 bar
FMM - P - M - ...	Pressure circuits 15 ... 300 bar
FMM - P - L - ...	Pressure circuits 15 ... 250/300 bar
FMM - A - S - ...	Pressure circuits 15 ... 300 bar

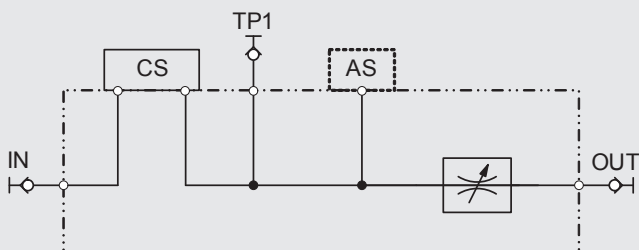
FMM - O - M - ... (previously known as: FMM)



Dimensions



Hydraulic circuit diagram



Technical specifications

Mounting position	vertical (flow from bottom to top)
Max. operating pressure	6 ... 15 bar / 87 ... 217 psi
Minimum differential pressure	6 bar / 87 psi (recommended)
Permitted viscosity range	1 ... 350 mm ² /s
Hydraulic connection (IN, OUT)	Test point type 1604 or G 1/4" (ISO 228)
Material of seal	FPM
Fluid temperature range	0 ... +85 °C / +32 ... +185 °F
Ambient temperature range	-30 ... +80 °C / -22 ... +176 °F
Storage temperature range	-40 ... +80 °C / -40 ... +176 °F
Relative humidity	max. 95%, non-condensing
Weight	4.3 kg

Model code

See last page

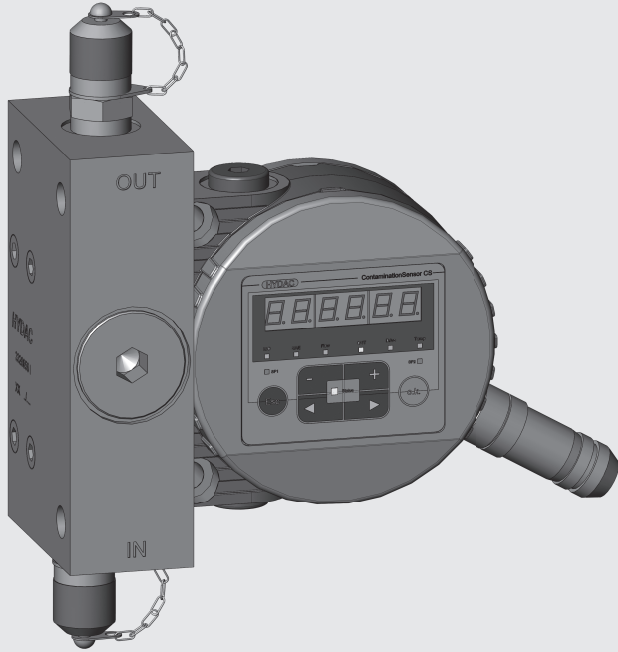
Items supplied

- 1 FMM - O - M - ...
- 1 Operating manual

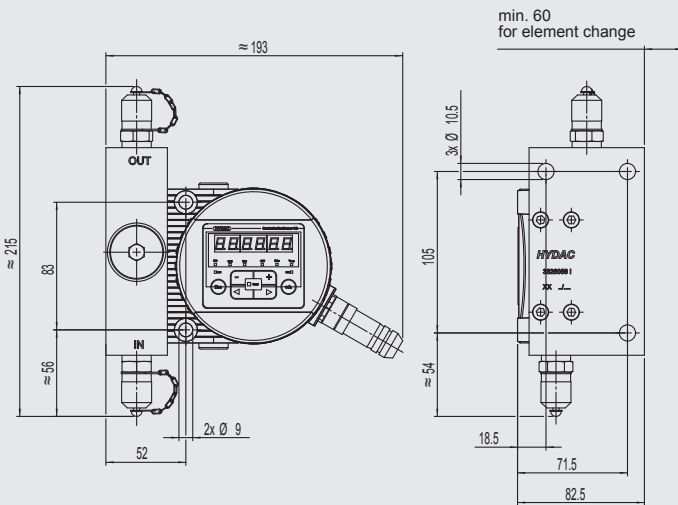
Accessories

A wide range of accessories can be found in the brochure "Filter Systems Accessories" (E 7.623...), page 209 onwards.

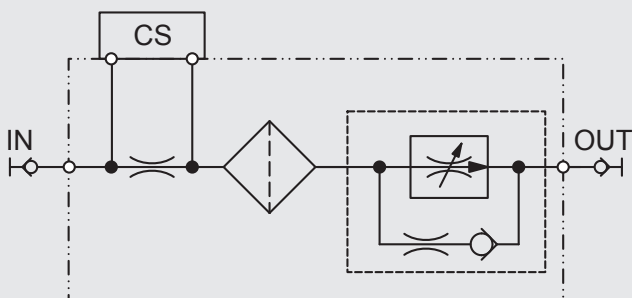
FMM - P - S - ... (previously known as: FMMP)



Dimensions



Hydraulic circuit diagram



Technical specifications

Mounting position	vertical (flow from bottom to top)
Max. operating pressure	15 ... 300 bar / 217 ... 4350 psi
Minimum differential pressure	15 bar / 217 psi
Permitted viscosity range	1 ... 350 mm ² /s
Hydraulic connection (IN, OUT)	Test point type 1604 or G 1/4" (ISO 228)
Material of seal	FPM / EPDM
Fluid temperature range	0 ... +85 °C / +32 ... +185 °F
Ambient temperature range	-30 ... +80 °C / -22 ... +176 °F
Storage temperature range	-40 ... +80 °C / -40 ... +176 °F
Relative humidity	max. 95%, non-condensing
Weight	4.3 kg

Model code

See last page

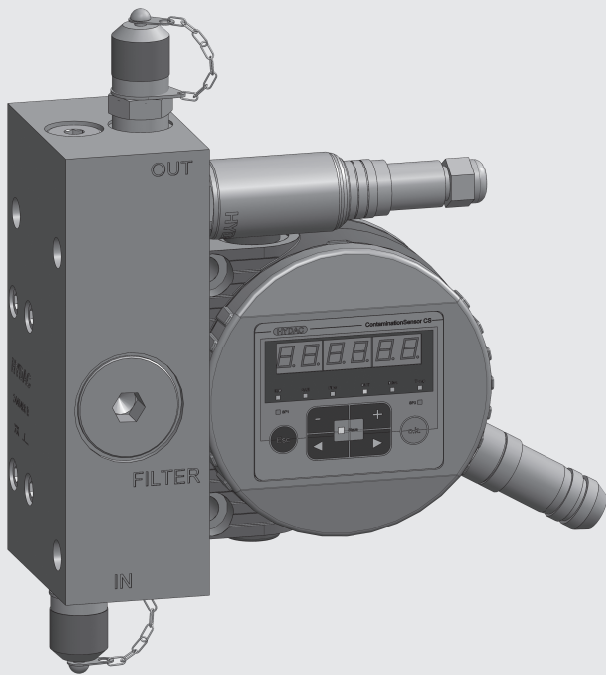
Items supplied

- 1 FMM - P - S - ...
- 1 Operating manual

Accessories

A wide range of accessories can be found in the brochure "Filter Systems Accessories" (E 7.623...), page 209 onwards.

FMM - P - M - ...



Technical specifications

Mounting position	vertical (flow from bottom to top)
Max. operating pressure	15 ... 300 bar / 217 ... 4350 psi
Minimum differential pressure	15 bar / 217 psi
Permitted viscosity range	1 ... 350 mm ² /s
Hydraulic connection (IN, OUT)	Test point type 1604 or G 1/4" (ISO 228)
Material of seal	FPM / EPDM
Fluid temperature range	0 ... +85 °C / +32 ... +185 °F
Ambient temperature range	-30 ... +80 °C / -22 ... +176 °F
Storage temperature range	-40 ... +80 °C / -40 ... +176 °F
Relative humidity	max. 95%, non-condensing
Weight	6.5 kg

Model code

See last page

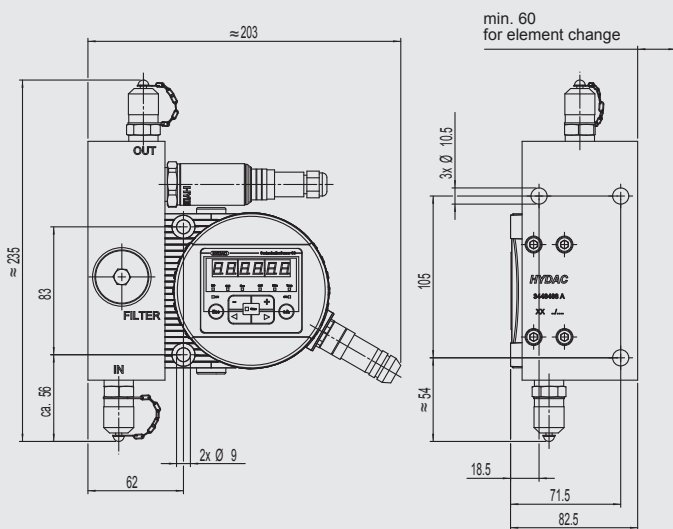
Items supplied

- 1 FMM - P - M - ...
- 1 Operating manual

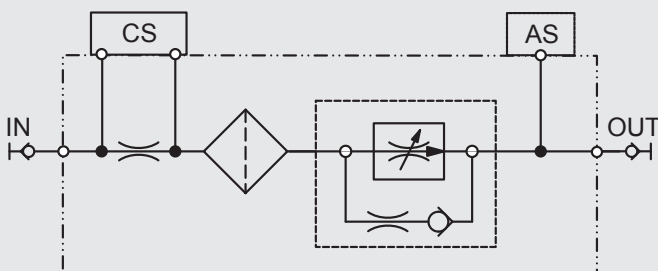
Accessories

A wide range of accessories can be found in the brochure "Filter Systems Accessories" (E 7.623...), page 209 onwards.

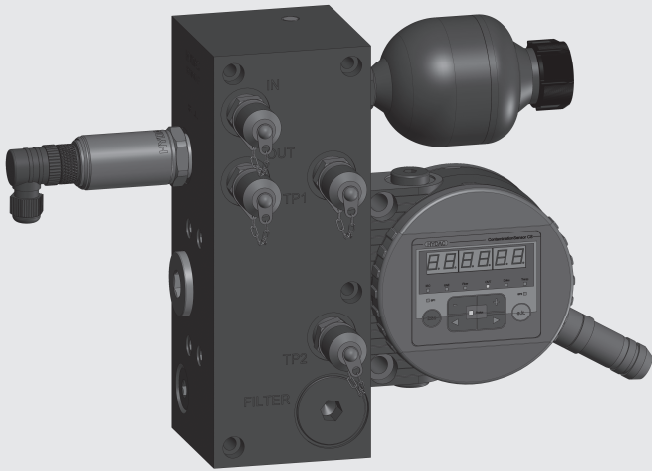
Dimensions



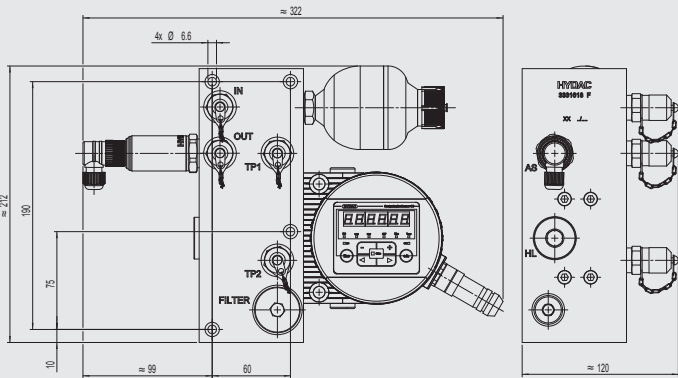
Hydraulic circuit diagram



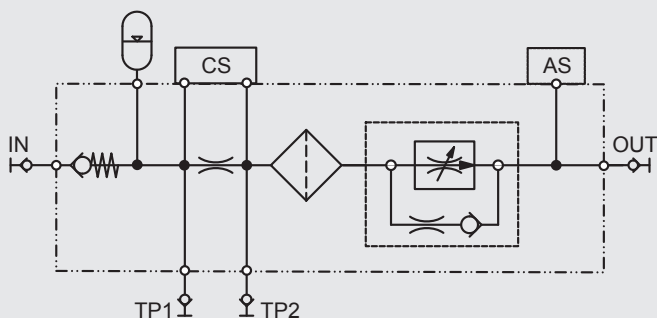
FMM - P - L - ... (previously known as: FMMHP)



Dimensions



Hydraulic circuit diagram



Technical specifications

Mounting position	vertical (flow from bottom to top)
Max. operating pressure without hydraulic accumulator	15 ... 300 bar / 217 ... 4350 psi
with hydraulic accumulator	15 ... 250 bar / 217 ... 3625 psi
Minimum differential pressure	15 bar / 217 psi
Permitted viscosity range	1 ... 350 mm ² /s
Hydraulic connection (IN, OUT)	Test point type 1604 or G 1/4" (ISO 228)
Material of seal	FPM / EPDM
Fluid temperature range	0 ... +85 °C / +32 ... +185 °F
Ambient temperature range	-30 ... +80 °C / -22 ... +176 °F
Storage temperature range	-40 ... +80 °C / -40 ... +176 °F
Relative humidity	max. 95%, non-condensing
Weight	12.5 kg

Model code

See last page

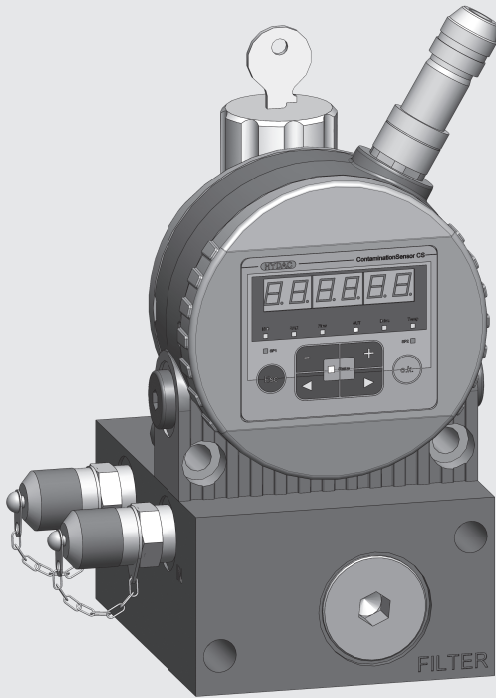
Items supplied

- 1 FMM - P - L - ...
- 1 Operating manual

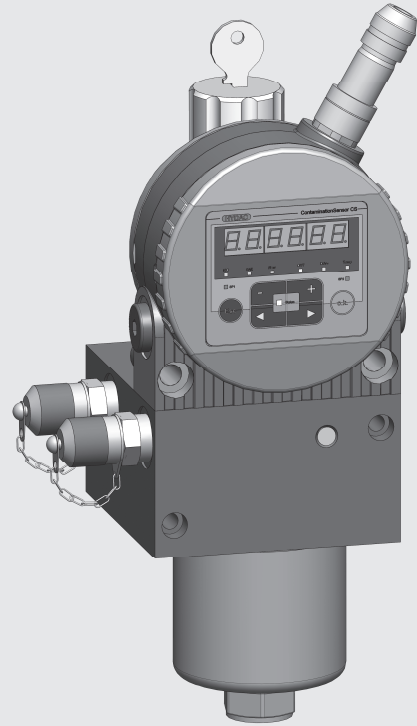
Accessories

A wide range of accessories can be found in the brochure "Filter Systems Accessories" (E 7.623...), page 209 onwards.

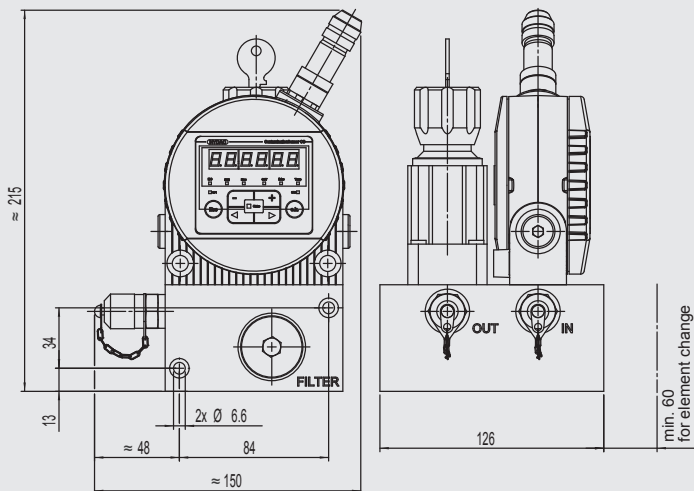
FMM - A - S - ... - 1 - ...



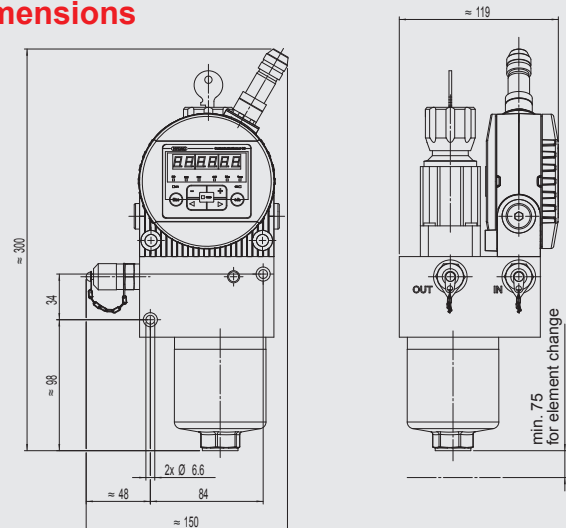
FMM - A - S - ... - 2 - ...



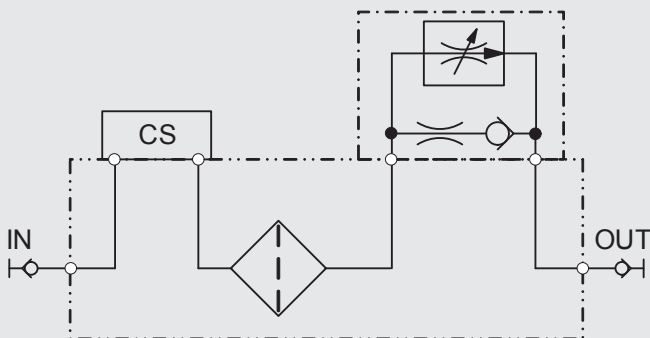
Dimensions



Dimensions



Hydraulic circuit diagram



Technical specifications

Mounting position	horizontal
Max. operating pressure	15 ... 300 bar / 217 ... 4350 psi
Minimum differential pressure	15 bar / 217 psi
Permitted viscosity range	1 ... 350 mm ² /s
Hydraulic connection	Test point type 1604 or G 1/4" (ISO 228)
Material of seal	FPM / EPDM
Fluid temperature range	0 ... +85 °C / +32 ... +185 °F
Ambient temperature range	-30 ... +80 °C / -22 ... +176 °F
Storage temperature range	-40 ... +80 °C / -40 ... +176 °F
Relative humidity	max. 95%, non-condensing
Weight	10 kg (protective filter) / 14 kg (DF60)

Model code

See last page

Items supplied

– 1 FMM - A - S - ...

– 1 Operating manual

Accessories

A wide range of accessories can be found in the brochure "Filter Systems Accessories" (E 7.623...), page 209 onwards.

Model code

FMM - O - M - 0 - CS 1 2 2 0 - A - AS - 0 - 0 - 0 / -000

TYPE

FMM= Fluid Monitoring Module

Hydraulic application

- O = Offline (offline circuit < 15 bar)
- P = Pressure Line (pressure circuit > 15 bar)
- A = Adjustable Flow Control Valve (pressure circuit > 15 bar)

Sensor combination

- S = CS1000
- M = CS1000 + AS1000
- L = CS1000 + AS1000 + HydacLab *

Seal

- 0 = FPM
- 1 = EPDM ⁽¹⁾ ⁽²⁾

Contamination Sensor CS1000 Series

- CS 1210 = ISO / SAE, without display (FPM)
- CS 1220 = ISO / SAE, with display (FPM)
- CS 1310 = ISO / SAE / NAS, without display (FPM)
- CS 1320 = ISO / SAE / NAS, with display (FPM)
- CS 1211 = ISO / SAE, without display (EPDM)
- CS 1221 = ISO / SAE, with display (EPDM)
- CS 1311 = ISO / SAE / NAS, without display (EPDM)
- CS 1321 = ISO / SAE / NAS, with display (EPDM)

Analogue interface of the CS1000

- A = 4 ... 20 mA
- B = 0 ... 10 VDC

Additional sensor

- Z = without
- AS = AS1000
- Z(AS) = set up for AS1000

Hydraulic accumulator

- 0 = without accumulator
- 1 = diaphragm accumulator SBO 250-0.075 (40 bar gas pressure) [not available in EPDM]

Filter

- 0 = without filter
- 1 = protective filter (25µm) ⁽²⁾
- 2 = DF60 (5µm) ⁽²⁾

Options

- 0 = no options

Modification number

- 000 = Modification number

⁽¹⁾ not for hydraulic accumulator

⁽²⁾ not for FMM-O

* Set up for HydacLab

Note

The information in this brochure relates to the operating conditions and applications described.

For applications and operating conditions not described, please contact the relevant technical department.

Subject to technical modifications.

HYDAC FILTER SYSTEMS GMBH

Industriegebiet

D-66280 Sulzbach / Saar

Tel.: +49 (0) 6897/509-01

Fax: +49 (0) 6897/509-846

Internet: www.hydac.com

E-Mail: filtersystems@hydac.com